

User Manual WiBee System Ver 1



Contents

Product Description	3
Key Benefits.....	3
WiBee - Product Features	4
LEDs key:	5
Specifications:.....	5
Typical wiring connection to an Electronic Lock:.....	6
Typical wiring connection to a Gate:.....	6
System settings using the PalGate App	7
The PalGate App installation process	7
New device setup	8
Add a new user.....	8
Important Information for optimal operation:.....	8

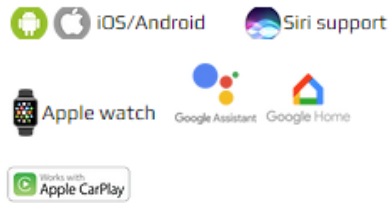
Product Description

The WiBee System IoT units are WiFi, Bluetooth and Sub-GHz Remote Control Receiver – 433MHz system, for access and management control. Through on board relays, users can control the unit via either a dedicated application or an easy-to-use WEB portal. This device seamlessly integrates with electric gates, doors, lighting systems, or any other appliance that would benefit from remote control and management.

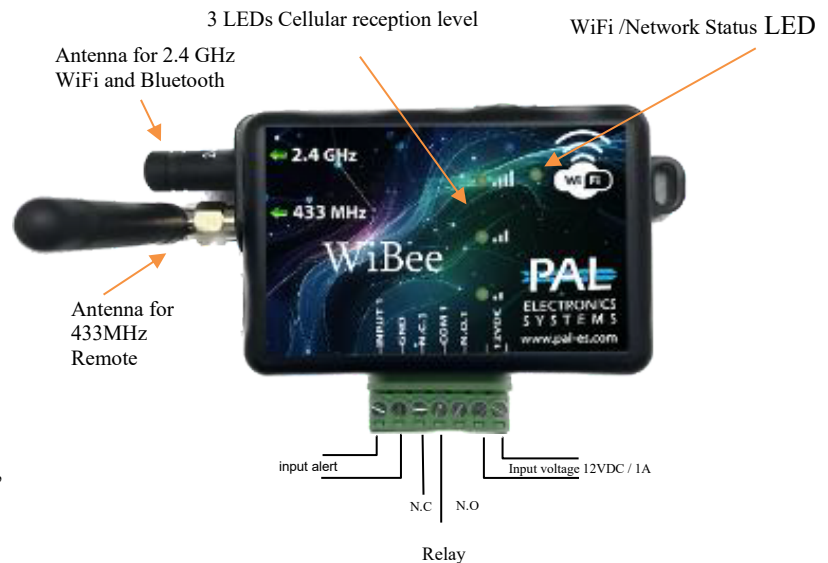
Key Benefits

- ☒ **Remote Access** - Complete and secure control of the unit anytime, and from anywhere.
- ☒ **"Nearby only" Feature** - Allows specific users to operate the unit only when in proximity.
- ☒ **Automatic opening** – PalGate App can operate the gate automatically when arriving at the gate by car, this feature will work only when the PalGate App is connected to a vehicle's multimedia system via Bluetooth.
- ☒ **Compact Size** - The unit has a small footprint, measuring just 80X53 mm.
- ☒ **Management and control** – using the "PalGate" App and an easy to use management WEB portal.
- ☒ **Visual Indicators** - Features 4 LED lights (1 to indicate that the WiFi is connected and 3 to indicate reception strength).
- ☒ **Customizable Access** – Ability to set up multiple administrators and authorized users for tailored access and control.
- ☒ **Real time notifications** - Receive instant email or push notifications to the PalGate App.
- ☒ **Voice Control** – Voice-controlled operation via Siri or Google Assistant.
- ☒ **Customization** – Ability to set timers, events, astronomic clocks and more.
- ☒ **User Management** - Easily import and export data using Excel.
- ☒ **Programmable relay pulse width**

WiBee - Product Features



- ☒ Control with PalGate App IOS & Android
- ☒ Manage with a App or user-friendly WEB portal*
- ☒ The system supports unlimited users, but each unit includes 5 PalGate App users by default. Additional users can be added if needed.
- ☒ 1 output relays (N.O./N.C.)
- ☒ 1 input channels with real-time notifications to Email and push to PalGate App
- ☒ Multiple opening methods: Proximity, App, Siri, and Google Assistant and Remote Control.
- ☒ Supports smart remote control & Wireless vehicle detector
- ☒ Allows customization of opening distance (Nearby only or unlimited distance)
- ☒ API integration available*
- ☒ Provides unlimited logs*
- ☒ User Access Restriction by Specific Days and Hours
- ☒ Features timers and event scheduling
- ☒ Equipped with a programmable astronomical clock
- ☒ Capability to import and export data via Excel files
- ☒ Adjustable relay pulse width
- ☒ Compatible with 2.4G WiFi.
- ☒ Operates on an input voltage of 12VDC
- ☒ Compact dimensions: 53x80 mm
- ☒ Weight 83 gr
- ☒ P/N WB011-R



LEDs key:

WiFi Network LED

Fast Flashing: System is booting

When the LED is steadily on, it indicates that the unit is connected to Wi-Fi.

WiFi Signal Strength Indicator

LED #1 ON: Low signal

LED #1 and #2 ON: Good signal

LED #1, #2, and #3 ON: Very good signal

Specifications:

Supply Voltage Range: 12-24V DC

Average Standby current consumption: ~40mA

Relay Contact Current Rating: 1A, 30V AC/DC (Resistive)

Antenna: 50Ω SMA Antenna interface

Temperature Range: -20°C to +70°C (-4°F to +158°F).

Exterior Dimensions: 53mm x 80 mm (2.09 in. x 3.15 in).

Net Weight: 87 gr (3.07 ounces)

Frequency Bands:

IEEE 802.11b/g/n (2.4 GHz WiFi)

and Bluetooth® 5 (LE)

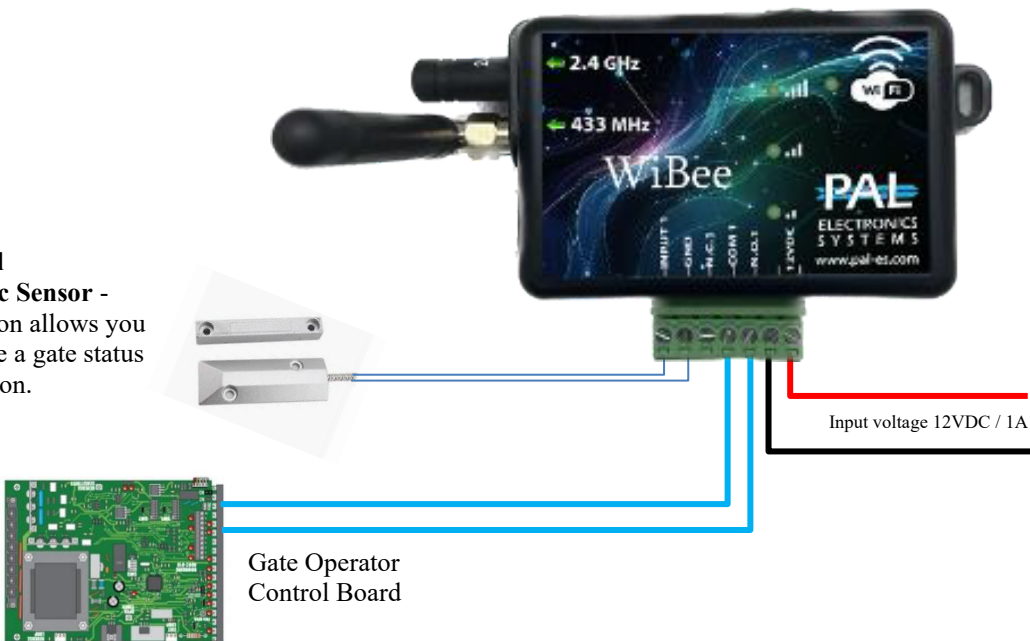
Typical wiring connection to an Electronic Lock:



Optional Magnetic Sensor - Installation allows you to receive a gate status notification.

Maximum load 2A/30VDC; 0.5A/125VAC

Typical wiring connection to a Gate:



Optional Magnetic Sensor - Installation allows you to receive a gate status notification.

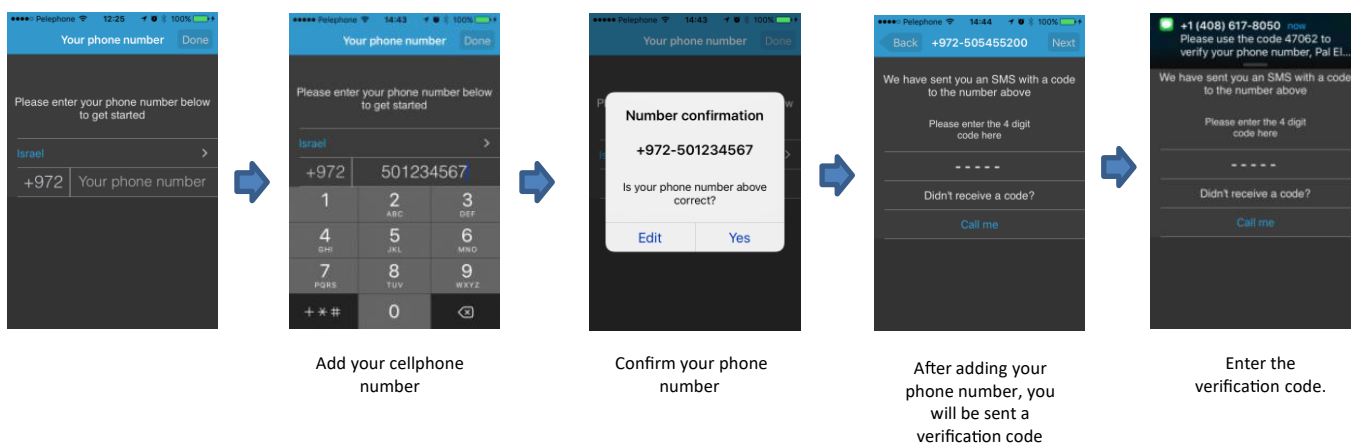
Gate Operator Control Board

System settings using the PalGate App

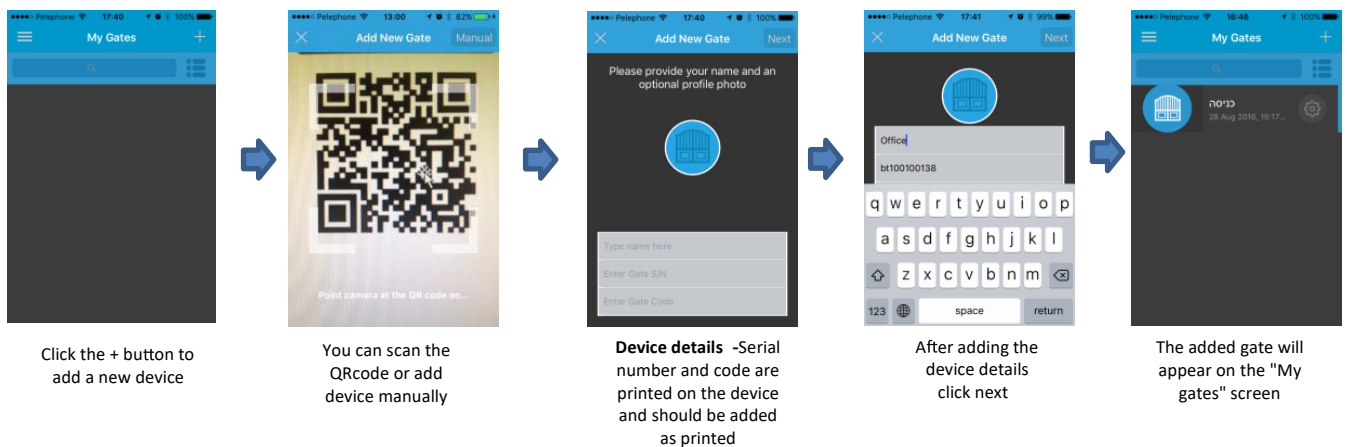
You may download our App from either the Apple App Store or from Google Play by searching for the name “PalGate”. If you prefer, you can access a direct link by scanning the QR codes below:



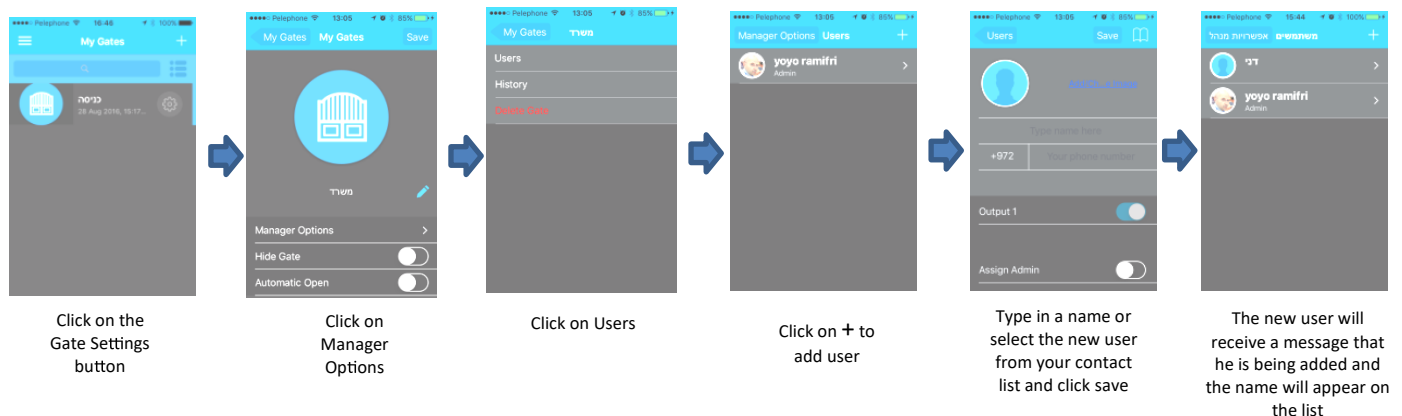
The PalGate App installation process



New device setup



Add a new user



Important Information for optimal operation:

- ☒ **Installation:** If the device will be installed in a metal cabinet, the installer must connect an external antenna to the device that will reach the outside of the cabinet.
- ☒ **Power Requirements:** The unit requires a stable power source of 12Vdc/1A.
- ☒ **Environment:** Protect the unit from excessive humidity and prevent insect infiltration.
- ☒ **Network Compatibility:** IEEE 802.11b/g/n (2.4 GHz WiFi) and Bluetooth® 5 (LE).
- ☒ **Maintenance:** Any maintenance or repairs should only be conducted by authorized installers.

* Optional feature. Payment may apply